

# SHAFT COUPLINGS

CLAMPING TYPE

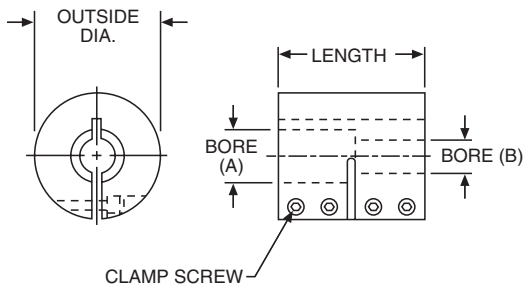
SCC SERIES



LOW CARBON STEEL COUPLINGS with a black oxide finish.  
BORE SIZES FROM 1/4" TO 2"

ALL DIMENSIONS IN INCHES  
ORDER BY CATALOG NUMBER OR ITEM CODE

Bore		O.D.	Length	Clamp Screws (4)	Catalog Number	Item Code
A	B					
1/4	1/4	13/16	1-1/4	4-40	SCC1/4x1/4	49289
3/8	1/4 3/8	1-1/16	1-5/8	6-32	SCC3/8x1/4 SCC3/8x3/8	49290 49291
1/2	3/8 1/2	1-1/4	1-7/8	8-32	SCC1/2x3/8 SCC1/2x1/2	49292 49293
5/8	1/2 5/8	1-1/2	2-1/4	10-32	SCC5/8x1/2 SCC5/8x5/8	49294 49295
3/4	1/2 5/8 3/4	1-3/4	2-5/8	1/4-28	SCC3/4x1/2 SCC3/4x5/8 SCC3/4x3/4	49296 49297 49298
7/8	5/8 7/8	1-7/8	2-7/8	1/4-28	SCC7/8x5/8 SCC7/8x7/8	49299 49300
1	1	2	3	1/4-28	SCC1x1	49302
1-1/8	1 1-1/8	2-1/8	3-1/4	1/4-28	SCC1-1/8x1 SCC1-1/8x1-1/8	49303 49304
1-1/4	1 1-1/4	2-1/4	3-3/8	1/4-28	SCC1-1/4x1 SCC1-1/4x1-1/4	49305 49306
1-3/8	1 1-3/8	2-3/8	3-5/8	1/4-28	SCC1-3/8x1 SCC1-3/8x1-3/8	49307 49308
1-1/2	1 1-1/2	2-1/2	3-3/4	1/4-28	SCC1-1/2x1 SCC1-1/2x1-1/2	49309 49310
1-3/4	1-3/4	3	4-1/2	5/16-24	SCC1-3/4x1-3/4	49312
2	2	3-1/4	4-7/8	5/16-24	SCC2x2	49314



STANDARD TOLERANCES

DIMENSION	TOLERANCE
BORE	All +.003 - +.000

LOAD DATA

Capacity is based on a standard steel, one-piece coupling mounted with recommended screw torque on a dry shaft. Capacities shown are for general guidance only. In applications involving control of torque loads, capacity should be determined experimentally on actual parts involved.

TORQUE CAPACITY

Bore	Torque Capacity (Lb. Ins.)	Screw Size	Recommended Screw Torque (Lb. Ins.)
1/4	72	4-40	20
3/8	192	6-32	30
1/2	480	8-32	55
5/8	1200	10-32	90
3/4	1500	1/4-28	90
7/8	1680		
1	1920		
1-1/8	2200		
1-1/4	3000		
1-3/8	3500		
1-1/2	4000	5/16-24	435
1-3/4	5400		
2	6000		